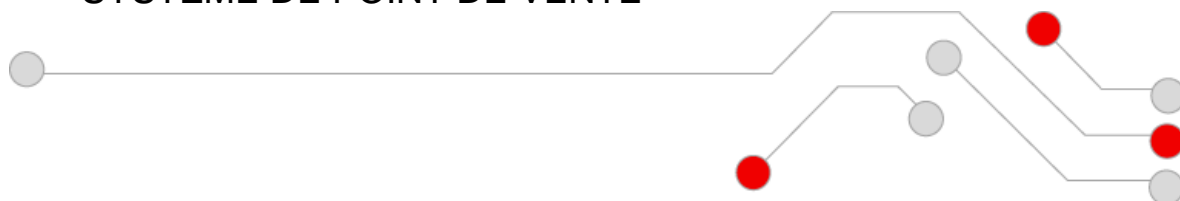


SYSTÈME DE POINT DE VENTE



ASSISTANCE CHDPOS v8.6.0+ w/ NF525



Archive et valideur



Computer Hardware Design SIA

Version : 2.2_4

Date : 04/2024

Historique des révisions

| Version | Date | Modifications | Notes |
|---------|------------|---|-------|
| 1.0 | 29.05.2019 | Version initiale | CHD |
| 1.1 | 01.11.2019 | Version du validateur d'archives fiscales mise à jour | CHD |
| 2.1_1 | 05.2021 | Révisé et mis à jour selon NF525 v2.1 | CHD |
| 2.1_2 | 07.2021 | SHA-1 -> SHA256 | CHD |
| 2.2_1 | 05.2022 | Révisé et mis à jour selon NF525 v2.2 | CHD |
| 2.2_2 | 04.2023 | Révisé et mis à jour selon NF525 v2.2 (8.5.0+) | CHD |
| 2.2_4 | 04.2024 | Révisé et mis à jour selon NF525 v2.2 (8.6.0+) | CHD |

Avis

Computer Hardware Design se réserve tous les droits d'apporter des modifications aux spécifications sans notification.

Cette publication, ou des parties de celle-ci, ne peuvent être reproduites sous quelque forme que ce soit sans l'autorisation écrite préalable de Computer Hardware Design. L'utilisation ou la distribution non autorisée de cette publication est interdite.

Computer Hardware Design Ltd.

15 Ulbrokas street

Riga, LV1021

Téléphone : +371 67802812

Fax : +371 67802822

chd@chd.lv

www.chd.lv

CONTENU

| | | |
|------|---|---|
| 1. | CREATION ET DESCRIPTION DE FICHIERS D'ARCHIVES..... | 4 |
| 1.1. | Architecture..... | 4 |
| 1.2. | Hachage et signature..... | 4 |
| 1.3. | Nommer les éléments du fichier de données (XML)..... | 5 |
| 1.4. | Structure..... | 5 |
| 1.5. | Code..... | 6 |
| 1.6. | Espace requis sur le disque dur pour les archives | 7 |
| 2. | VALIDATION DES FICHIERS D'ARCHIVES..... | 8 |
| 3. | ÉCHANTILLON DE FICHIER D'ARCHIVE (XML) | 9 |

1. Création et description de fichiers d'archives

1.1. Architecture

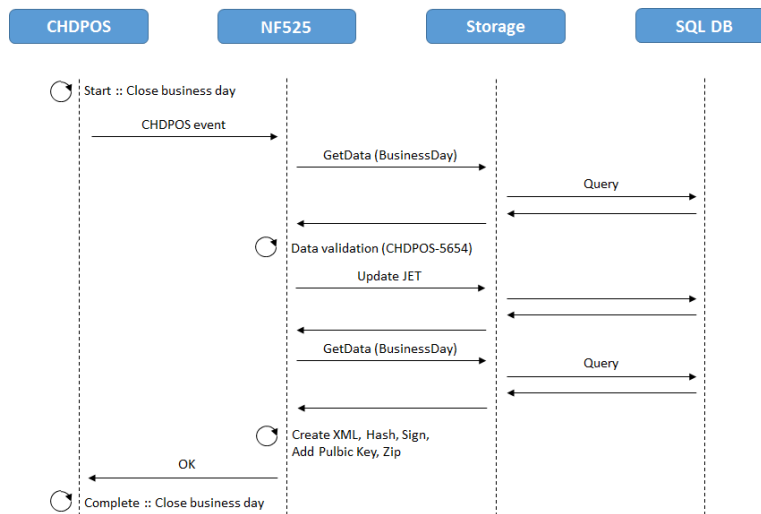


Figure 1 Création de fichier d'archive.

CHDPOS – NF525 – Stockage – SQL DB

Colonne 1 : Début : fermer le jour ouvrable – Événement CHDPOS – OK – Terminer : fermer le jour ouvrable

Colonne 2 : GetData (BusinessDay) – Validation des données (CHDPOS-5654) – Mise à jour JET – GetData (BusinessDay) – Créer XML, hacher, signer, ajouter clé publique, mettre au format zip

Colonne 3 : Demande – Demande

CHDPOS initialise la fermeture de la période. Au cours de ce processus, la norme NF525 est invoquée et agrège les données pour la période commerciale actuelle (jour ouvrable) en demandant ces informations à la base de données par le biais du pilote de stockage.

La validation des données est effectuée à l'étape suivante et toute incohérence est signalée dans le journal d'événements techniques :

- 1) Tous les enregistrements de chaque chaîne sont validés
- 2) Les lacunes dans les ID des séquences sont vérifiées

Le journal d'événements techniques est mis à jour pour enregistrer les résultats de la validation. Les données sont à nouveau extraites de la base de données, le fichier XML est généré, haché et signé. La dernière étape consiste à ajouter la clé publique au fichier XML et à créer un fichier d'archive (zip).

Un exemple de fichier XML est fourni dans la section « 3 Échantillon de fichier d'archive (XML) ».

1.2. Hachage et signature

L'approche suivante est utilisée :

- 1) Créer un hachage à l'aide de l'algorithme SHA-256
- 2) Signer le hachage à l'aide d'une clé privée
- 3) Ajouter la clé publique au fichier XML

1.3. Nommer les éléments du fichier de données (XML)

La convention de nommage dans le fichier de données est la même que celle définie dans les normes NF525 R12 et R13. Par exemple, le champ ENC-TIK-TAG-VER dans le champ de données a la même signification (version du logiciel) que celle définie dans les documents NF525 R12 et/ou R13.

1.4. Structure

| Clés XML | Description |
|--|--|
| <Archive Date="YYYYMMDD" Version="2.0"> | Date et version |
| <SaleHeaderTable> | Ligne d'en-tête |
| <SaleHeader> | |
| ... | |
| FIELD | Champs de données avec le label FIDELE |
| ... | |
| <PreviousSignature>...</PreviousSignature> | Signature précédente |
| <SignableData>...</SignableData> | Chaîne de données signables |
| </SaleHeader> | |
| </SaleHeaderTable> | |
| <SaleDataTable> | Données de la ligne |
| <SaleData> | |
| ... | |
| FIELD | Champs de données avec le label FIDELE |
| ... | |
| </SaleData> | |
| </SaleDataTable> | |
| <SaleVATTable> | Données TVA |
| <SaleVAT> | |
| ... | |
| FIELD | Champs de données avec le label FIDELE |
| ... | |
| </SaleVAT> | |
| </SaleVATTable> | |
| <SaleTotalTable> | |
| <SaleTotal> | |
| ... | |
| FIELD | Champs de données avec le label FIDELE |
| ... | |
| </SaleTotal> | |
| </SaleTotalTable> | |
| <SaleComplementaryTable> | |
| <SaleComplementary> | |
| ... | |
| FIELD | Champs de données avec le label FIDELE |
| ... | |
| </SaleComplementary> | |
| </SaleComplementaryTable> | |
| <SaleRegulationTable> | |
| <SaleRegulation> | |
| ... | |
| FIELD | Champs de données avec le label FIDELE |
| ... | |
| </SaleRegulation> | |
| </SaleRegulationTable> | |
| <DuplicataTable> | Données du duplicata |

| | |
|--|--|
| <Duplicata> | |
| ... | Champs de données avec le label FIDELE |
| FIELDS | |
| ... | Signature précédente |
| <PreviousSignature>...</PreviousSignature> | Chaîne de données signables |
| <SignableData>...</SignableData> | |
| </Duplicata> | |
| </DuplicataTable> | Grand total données |
| <GrandTotalTable> | |
| <GrandTotal> | |
| ... | Champs de données avec le label FIDELE |
| FIELDS | |
| ... | Signature précédente |
| <PreviousSignature>...</PreviousSignature> | Chaîne de données signables |
| <SignableData>...</SignableData> | |
| </GrandTotal> | |
| </GrandTotalTable> | Données JET |
| <JETTable> | |
| <JET> | |
| ... | Champs de données avec le label FIDELE |
| FIELDS | |
| ... | Signature précédente |
| <PreviousSignature>...</PreviousSignature> | Chaîne de données signables |
| <SignableData>...</SignableData> | |
| </JET> | |
| </JETTable> | |
| <PublicKey> | Certificat de clé publique |
| -----BEGIN CERTIFICATE----- | |
| ... | |
| -----END CERTIFICATE----- | |
| </PublicKey> | |
| <Signature xmlns="http://www.w3.org/2000/09/xmldsig#"> | |
| <SignedInfo> | |
| ... | |
| </SignedInfo> | Signature |
| <SignatureValue>...</SignatureValue> | |
| </Signature> | Fin du fichier d'archive |
| </Archive> | |

1.5. Code

```
public static void SignXml (XmlDocument xmlDoc, RSA key)
{
    // Check arguments.
    if (xmlDoc == null)
        throw new ArgumentException ("xmlDoc");
    if (key == null)
        throw new ArgumentException ("key");

    // Create a SignedXml object.
    var signedXml = new SignedXml (xmlDoc) {SigningKey = key};

    // Add the key to the SignedXml document.

    // Create a reference to be signed.
    var reference = new Reference {Uri = ""};
```

```
// Add an enveloped transformation to the reference.
var env = new XmlDsigEnvelopedSignatureTransform ();
reference.AddTransform (env);

// Add the reference to the SignedXml object.
signedXml.AddReference (reference);

// Compute the signature.
signedXml.ComputeSignature();

// Get the XML representation of the signature and save
// it to an XmlElement object.
var xmlDigitalSignature = signedXml.GetXml ();

// Append the element to the XML document.
xmlDoc.DocumentElement.AppendChild (xmlDoc.ImportNode (xmlDigitalSignature, true));
}
```

1.6. Espace requis sur le disque dur pour les archives

Hypothèses :

- 1) 300 tickets par jour
- 2) 10 articles par ticket

Faits :

- 1) 5 tickets avec 10 articles par ticket prend environ 20 kb (en format zip)

Mathématiques : $20 \text{ ko} * 60 * 365 \text{ jours} * 7 \text{ ans} = \sim 3 \text{ Go}$

2. Validation des fichiers d'archives

Utilisez Fiscal Archive Validator (FiscalArchiveValidator.exe) pour valider les fichiers d'archives. Il est possible de valider un seul fichier ou plusieurs fichiers stockés dans un répertoire. Des options de ligne de commande sont également disponibles. La version actuelle est 1.0.0.4.

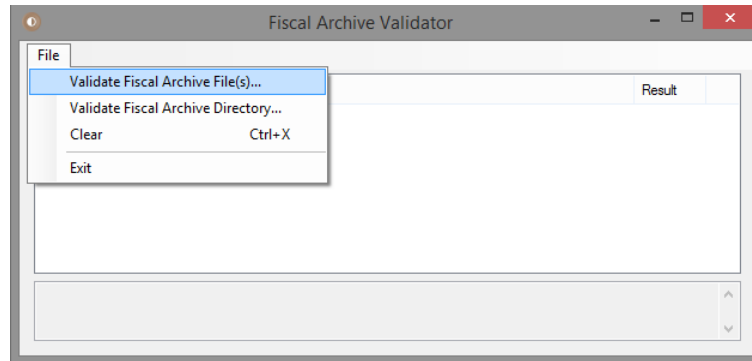


Figure 2 Fiscal Archive Validator

Fiscal Archive Validator supporte toutes les versions de CHDPOS avec NF525. La version du fichier d'archive est détectée automatiquement.

Pour valider le fichier d'archive :

- 1) Lancez FiscalArchiveValidator.exe.
- 2) Sélectionnez le fichier ou le répertoire.
- 3) Vérifiez les résultats pour chaque fichier.
- 4) Cliquez sur un fichier pour obtenir des résultats détaillés.

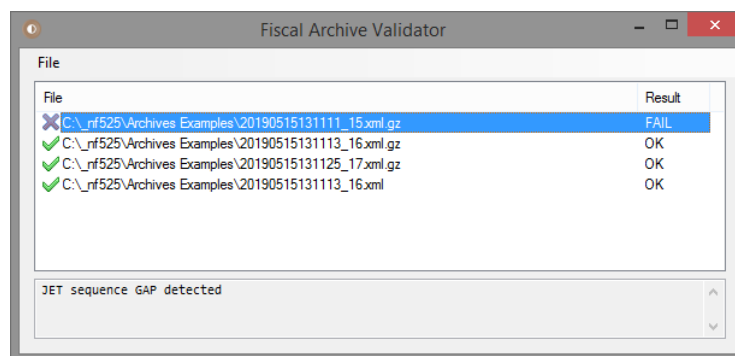


Figure 3 Résultats de validation

3. Échantillon de fichier d'archive (XML)

Un échantillon de fichier XML provenant d'une vente simple est disponible ci-dessous.

```
<Archive Date="20240411121332" Version="4.0" POS_Software="CHDPOS 8.6.0" Company="Tiger Stores France 4 SAS"
Address="10 route de Paris, Nantes, 44305, France" TVA_Nr="FR 22802464578" NAF="4778C" Sirret_Nr="802 464 578
00102" Certificate_Nr="0251" ProductCategory="B" ArchiveDocumentation="https://www.chd-
global.com/uploads/support/97/nf525-v2.2-2023.zip">
```

```
<Sequences>
```

```
<Sequence name="Ticket" startValue="123086" endValue="123088" />
```

```
<Sequence name="GrandTotal" startValue="124336" endValue="124339" />
```

```
<Sequence name="Duplicata" startValue="2061" endValue="2062" />
```

```
<Sequence name="JET" startValue="29487" endValue="29497" />
```

```
</Sequences>
```

```
<SaleHeaderTable>
```

```
<SaleHeader>
```

```
<ENC-TIK-NUM>123087</ENC-TIK-NUM>
```

```
<ENC-TIK-TAG-VER>8.6.0</ENC-TIK-TAG-VER>
```

```
<ENC-TIK-PRN-NBR>1</ENC-TIK-PRN-NBR>
```

```
<ENC-TIK-SOC-ETS>Tiger Stores France 4 SAS</ENC-TIK-SOC-ETS>
```

```
<ENC-TIK-SOC-ADR>10 route de Paris</ENC-TIK-SOC-ADR>
```

```
<ENC-TIK-SOC-CCP>44305</ENC-TIK-SOC-CCP>
```

```
<ENC-TIK-SOC-VIL>Nantes</ENC-TIK-SOC-VIL>
```

```
<ENC-TIK-SOC-PAY>France</ENC-TIK-SOC-PAY>
```

```
<ENC-TIK-SOC-SIR>802 464 578 00102</ENC-TIK-SOC-SIR>
```

```
<ENC-TIK-SOC-NAF>4778C</ENC-TIK-SOC-NAF>
```

```
<ENC-TIK-SOC-TVA>FR 22802464578</ENC-TIK-SOC-TVA>
```

```
<ENC-TIK-VEN-NID>99</ENC-TIK-VEN-NID>
```

```
<ENC-TIK-VEN-NOM>CHD Supervisor</ENC-TIK-VEN-NOM>
```

```
<ENC-TIK-OPS-NID>99</ENC-TIK-OPS-NID>
```

```
<ENC-TIK-OPS-NOM>CHD Supervisor</ENC-TIK-OPS-NOM>
```

```
<ENC-TIK-CAI-NID>R216440023</ENC-TIK-CAI-NID>
```

```
<ENC-TIK-HOR-GDH>20240411121149</ENC-TIK-HOR-GDH>
```

```
<ENC-OPE-TYP>Sale</ENC-OPE-TYP>
```

```
<ENC-TIK-DOC-TYP>Receipt</ENC-TIK-DOC-TYP>
```

```
<ENC-TIK-LIG-NBR>1</ENC-TIK-LIG-NBR>
```

```
<ENC-TIK-STA>Production</ENC-TIK-STA>
```

```
<ENC-TIK-TAG-SIG>iPksucY_OaOY2EQgasGQpLQGRY7x0VW-
```

```
jTYCdYGGG89DuoADPOYd4SoBSQv9jUqICsBDDOREYvTADzH1ABVvggiLrLEbluOyVbXmu0erEivaZuWH4-ndGk-
```

```
YImLNQNNY9XSKf4y6fZC0CLpYF09091akO8gLqHyLrGHhTtVjB_jza22PXyx5xsWF_2iP5Jvh5DBq-
```

```
CRMDI1UwFQzybutLg2nvxMyJnhFdvYCCsYUWHSyZ_uElb-
```

```
MsBAhTMeVE4TJ62yKudQ8_vWrla8X2DWc6VwrH2bUdZzMH2PAVq-KCHS8OFNRAY3OwzyKfru7Mp0iMAjz5O-
```

```
xIjZsZ0OdYaQ</ENC-TIK-TAG-SIG>
```

```
<ENC-TIK-TAG-RET>B0251 (kY2G)</ENC-TIK-TAG-RET>
```

```
<ENC-TIK-LOG>CHDPOS</ENC-TIK-LOG>
```

```
<ENC-TIK-MOTIF>
```

```
</ENC-TIK-MOTIF>
```

```
<ENC-TIK-DELIV-TYP>Print</ENC-TIK-DELIV-TYP>
```

```
<PreviousSignature>Zu7Y1Ijp1IqjytASWzPzImY3f0jVXi1wyxcxsFI3FpHlnqmNqKtyvOCj05JfAh57aryJGebz3wsbOVx05561gj
fp6f3oUcBpBaumzSBBeUE6GDzVM5tA6ARiZ3VNOFavt1ePvTlalFdC1fNfpOzNzjAofTR9QYdDG9kLnZKh05SQW834Pp1ApbMs
Nk_ANf8AIPYAP7MwNVS2AvFLIYDItTakZmWRMtujYyPVOQubWTFPeuYRrbNsN7FijfO6zy0wy1FfM7JS3XyMoPatsvfydc0Dy5f
ffty2fMMOWQjrkhrmdUvqKxUWZmrDFvCCgN7eVP71J_ZhkziaQH0d4CEA</PreviousSignature>
```

```
<SignableData>0550:200,200,20240411121149,123087,Sale,O,Zu7Y1Ijp1IqjytASWzPzImY3f0jVXi1wyxcxsFI3FpHlnqmN
qKtyvOCj05JfAh57aryJGebz3wsbOVx05561gjfp6f3oUcBpBaumzSBBeUE6GDzVM5tA6ARiZ3VNOFavt1ePvTlalFdC1fNfpOzNz
jAofTR9QYdDG9kLnZKh05SQW834Pp1ApbMsNk_ANf8AIPYAP7MwNVS2AvFLIYDItTakZmWRMtujYyPVOQubWTFPeuYRrbNs
N7FijfO6zy0wy1FfM7JS3XyMoPatsvfydc0Dy5ffty2fMMOWQjrkhrmdUvqKxUWZmrDFvCCgN7eVP71J_ZhkziaQH0d4CEA</S
ignableData>
```

```
</SaleHeader>
```

```
<SaleHeader>
```

```
<ENC-TIK-NUM>123088</ENC-TIK-NUM>
```

```
<ENC-TIK-TAG-VER>8.6.0</ENC-TIK-TAG-VER>
```

<ENC-TIK-PRN-NBR>1</ENC-TIK-PRN-NBR>
<ENC-TIK-SOC-ETS>Tiger Stores France 4 SAS</ENC-TIK-SOC-ETS>
<ENC-TIK-SOC-ADR>10 route de Paris</ENC-TIK-SOC-ADR>
<ENC-TIK-SOC-CCP>44305</ENC-TIK-SOC-CCP>
<ENC-TIK-SOC-VIL>Nantes</ENC-TIK-SOC-VIL>
<ENC-TIK-SOC-PAY>France</ENC-TIK-SOC-PAY>
<ENC-TIK-SOC-SIR>802 464 578 001 02</ENC-TIK-SOC-SIR>
<ENC-TIK-SOC-NAF>4778C</ENC-TIK-SOC-NAF>
<ENC-TIK-SOC-TVA>FR 22802464578</ENC-TIK-SOC-TVA>
<ENC-TIK-VEN-NID>99</ENC-TIK-VEN-NID>
<ENC-TIK-VEN-NOM>CHD Supervisor</ENC-TIK-VEN-NOM>
<ENC-TIK-OPS-NID>99</ENC-TIK-OPS-NID>
<ENC-TIK-OPS-NOM>CHD Supervisor</ENC-TIK-OPS-NOM>
<ENC-TIK-CAI-NID>R216440023</ENC-TIK-CAI-NID>
<ENC-TIK-HOR-GDH>20240411121316</ENC-TIK-HOR-GDH>
<ENC-OPE-TYP>Refund</ENC-OPE-TYP>
<ENC-TIK-DOC-TYP>Receipt</ENC-TIK-DOC-TYP>
<ENC-TIK-LIG-NBR>1</ENC-TIK-LIG-NBR>
<ENC-TIK-STA>Production</ENC-TIK-STA>
<ENC-TIK-TAG>
SIG>gG6W4lwpSZS18FUH1knKAI2scKB53kO3e5qwpG1ZojApgQmnvLWTO1GWpnYKjr_DNECQRrDi58zSvdYp4Sjdqlnm4MOH
73rqnfEVAyWBlIrUvnw1NLkMX7EnUC7Y3c_AMX5CV__zgElxo38ftwxeW-e5IsnF7tquO7dafhxPeOvsXaUMOCrdGwcX-
IRrx6NRwzysbk-fCElc3nkexfdXsN30vbKCb7gDiHhGocH4TCIrleOzk_pkiuCCe7ACyhWn-
Zmg8Mi2b7DRmbzv7_fGKL3OH4VgJToh5HsZN0cQS2ayTbJMbWaQDOq9MWWhBDEyrOjWa79Ym0y96u9HLBYochA</ENC-
TIK-TAG-SIG>
<ENC-TIK-TAG-RET>B0251 (6w8n)</ENC-TIK-TAG-RET>
<ENC-TIK-LOG>CHDPOS</ENC-TIK-LOG>
<ENC-TIK-MOTIF>RETURN</ENC-TIK-MOTIF>
<ENC-TIK-DELIV-TYP>Print</ENC-TIK-DELIV-TYP>
<PreviousSignature>iPkSucY_OaOY2EQgasGQplQGRY7x0VW-
jTyCDyGGG89DuoADPOYd4SoBSQv9jUqICsBDDOREYvTADzH1ABVvggiLrLEbluOyVbXmu0erEivaZuWH4-ndGk-
YImLNQNNY9XSKf4y6fZC0CLpYF09091akO8gLqHyLrGHhTtvJB_jza22PXyx5xsWF_2iP5Jvh5DBq-
CRMDI1UwFQzybutLg2nvxMyJnlhFdvYCcsYUWHSyZ_uElb-
MsBAhTMeVE4TJ62yKudQ8_vWrla8X2DWc6VwrH2bUdZzMH2PAVq-KCHS8OFdNRAY3OwzyKfruT7Mp0iMAjz5O-
xljZsZ0OdYaQ</PreviousSignature>
<SignableData>0550:-200,-200,20240411121316,123088,Refund,O,iPkSucY_OaOY2EQgasGQplQGRY7x0VW-
jTyCDyGGG89DuoADPOYd4SoBSQv9jUqICsBDDOREYvTADzH1ABVvggiLrLEbluOyVbXmu0erEivaZuWH4-ndGk-
YImLNQNNY9XSKf4y6fZC0CLpYF09091akO8gLqHyLrGHhTtvJB_jza22PXyx5xsWF_2iP5Jvh5DBq-
CRMDI1UwFQzybutLg2nvxMyJnlhFdvYCcsYUWHSyZ_uElb-
MsBAhTMeVE4TJ62yKudQ8_vWrla8X2DWc6VwrH2bUdZzMH2PAVq-KCHS8OFdNRAY3OwzyKfruT7Mp0iMAjz5O-
xljZsZ0OdYaQ</SignableData>
</SaleHeader>
</SaleHeaderTable>
<SaleDataTable>
<SaleData>
<ENC-NID>361418</ENC-NID>
<ENC-TIK-ORI-NUM>123087</ENC-TIK-ORI-NUM>
<ENC-TIK-LIG-NUM>1</ENC-TIK-LIG-NUM>
<ENC-TIK-LIG-PRO-NID>100000</ENC-TIK-LIG-PRO-NID>
<ENC-TIK-LIG-PRO-LIB>TORTILLAS NATURE 200G.</ENC-TIK-LIG-PRO-LIB>
<ENC-TIK-LIG-PRO-QTE>1</ENC-TIK-LIG-PRO-QTE>
<ENC-TIK-LIG-TAX-NID>B</ENC-TIK-LIG-TAX-NID>
<ENC-TIK-LIG-TAX-TXX>5.50</ENC-TIK-LIG-TAX-TXX>
<ENC-TIK-LIG-PRO-TTC>2.00</ENC-TIK-LIG-PRO-TTC>
<ENC-TIK-LIG-TOT-MHT>1.90</ENC-TIK-LIG-TOT-MHT>
<ENC-TIK-LIG-TOT-TTC>2.00</ENC-TIK-LIG-TOT-TTC>
<ENC-TIK-LIG-HOR-GDH>20240411121149</ENC-TIK-LIG-HOR-GDH>
<ENC-TIK-LIG-REM-NID>
</ENC-TIK-LIG-REM-NID>
<ENC-TIK-LIG-REM-TXX>
</ENC-TIK-LIG-REM-TXX>
<ENC-TIK-LIG-REM-TOT>0.00</ENC-TIK-LIG-REM-TOT>
</SaleData>
<SaleData>

```
<ENC-NID>361419</ENC-NID>
<ENC-TIK-ORI-NUM>123088</ENC-TIK-ORI-NUM>
<ENC-TIK-LIG-NUM>1</ENC-TIK-LIG-NUM>
<ENC-TIK-LIG-PRO-NID>100000</ENC-TIK-LIG-PRO-NID>
<ENC-TIK-LIG-PRO-LIB>TORTILLAS NATURE 200G.</ENC-TIK-LIG-PRO-LIB>
<ENC-TIK-LIG-PRO-QTE>-1</ENC-TIK-LIG-PRO-QTE>
<ENC-TIK-LIG-TAX-NID>B</ENC-TIK-LIG-TAX-NID>
<ENC-TIK-LIG-TAX-TXX>5.50</ENC-TIK-LIG-TAX-TXX>
<ENC-TIK-LIG-PRO-TTC>2.00</ENC-TIK-LIG-PRO-TTC>
<ENC-TIK-LIG-TOT-MHT>-1.90</ENC-TIK-LIG-TOT-MHT>
<ENC-TIK-LIG-TOT-TTC>-2.00</ENC-TIK-LIG-TOT-TTC>
<ENC-TIK-LIG-HOR-GDH>20240411121316</ENC-TIK-LIG-HOR-GDH>
<ENC-TIK-LIG-REM-NID>
</ENC-TIK-LIG-REM-NID>
<ENC-TIK-LIG-REM-TXX>
</ENC-TIK-LIG-REM-TXX>
<ENC-TIK-LIG-REM-TOT>0.00</ENC-TIK-LIG-REM-TOT>
</SaleData>
</SaleDataTable>
<SaleVATTable>
<SaleVAT>
<ENC-TIK-NUM>123087</ENC-TIK-NUM>
<ENC-TIK-TOT-MHT>1.90</ENC-TIK-TOT-MHT>
<ENC-TIK-TVA-NID>B</ENC-TIK-TVA-NID>
<ENC-TIK-TVA-TXX>5.5000</ENC-TIK-TVA-TXX>
<ENC-TIK-TVA-MTN>0.10</ENC-TIK-TVA-MTN>
<ENC-TIK-TOT-TTC>2.00</ENC-TIK-TOT-TTC>
</SaleVAT>
<SaleVAT>
<ENC-TIK-NUM>123088</ENC-TIK-NUM>
<ENC-TIK-TOT-MHT>-1.90</ENC-TIK-TOT-MHT>
<ENC-TIK-TVA-NID>B</ENC-TIK-TVA-NID>
<ENC-TIK-TVA-TXX>5.5000</ENC-TIK-TVA-TXX>
<ENC-TIK-TVA-MTN>-0.10</ENC-TIK-TVA-MTN>
<ENC-TIK-TOT-TTC>-2.00</ENC-TIK-TOT-TTC>
</SaleVAT>
</SaleVATTable>
<SaleTotalTable>
<SaleTotal>
<ENC-TIK-NUM>123087</ENC-TIK-NUM>
<ENC-TIK-TOT-MHT>1.90</ENC-TIK-TOT-MHT>
<ENC-TIK-TOT-TTC>2.00</ENC-TIK-TOT-TTC>
<ENC-TIK-REM-MTN>0.00</ENC-TIK-REM-MTN>
</SaleTotal>
<SaleTotal>
<ENC-TIK-NUM>123088</ENC-TIK-NUM>
<ENC-TIK-TOT-MHT>-1.90</ENC-TIK-TOT-MHT>
<ENC-TIK-TOT-TTC>-2.00</ENC-TIK-TOT-TTC>
<ENC-TIK-REM-MTN>0.00</ENC-TIK-REM-MTN>
</SaleTotal>
</SaleTotalTable>
<SaleComplementaryTable>
<SaleComplementary>
<ENC-TIK-NUM>123087</ENC-TIK-NUM>
<ENC-TIK-TOT-TTC>2.00</ENC-TIK-TOT-TTC>
</SaleComplementary>
<SaleComplementary>
<ENC-TIK-NUM>123088</ENC-TIK-NUM>
<ENC-TIK-TOT-TTC>-2.00</ENC-TIK-TOT-TTC>
</SaleComplementary>
</SaleComplementaryTable>
<SaleRegulationTable>
<SaleRegulation>
<ENC-TIK-ORI-NUM>123087</ENC-TIK-ORI-NUM>
```

<ENC-TIK-REG-MOD-LIB>Cash</ENC-TIK-REG-MOD-LIB>
<ENC-TIK-REG-MTN>2.00</ENC-TIK-REG-MTN>
<ENC-TIK-REG-DEV-TDC>1.00000</ENC-TIK-REG-DEV-TDC>
<ENC-TIK-REG-OPE-TYP>Sale</ENC-TIK-REG-OPE-TYP>
<ENC-TIK-REG-USR-NID>99</ENC-TIK-REG-USR-NID>
<ENC-TIK-REG-HOR-GDH>20240411121149</ENC-TIK-REG-HOR-GDH>
</SaleRegulation>
<SaleRegulation>
<ENC-TIK-ORI-NUM>123088</ENC-TIK-ORI-NUM>
<ENC-TIK-REG-MOD-LIB>Cash</ENC-TIK-REG-MOD-LIB>
<ENC-TIK-REG-MTN>2.00</ENC-TIK-REG-MTN>
<ENC-TIK-REG-DEV-TDC>1.00000</ENC-TIK-REG-DEV-TDC>
<ENC-TIK-REG-OPE-TYP>Sale</ENC-TIK-REG-OPE-TYP>
<ENC-TIK-REG-USR-NID>99</ENC-TIK-REG-USR-NID>
<ENC-TIK-REG-HOR-GDH>20240411121316</ENC-TIK-REG-HOR-GDH>
</SaleRegulation>
</SaleRegulationTable>
<DuplicataTable>
<Duplicata>
<ENC-DUP-NID>2062</ENC-DUP-NID>
<ENC-DUP-ORI-NUM>123087</ENC-DUP-ORI-NUM>
<ENC-DUP-TYP>Ticket</ENC-DUP-TYP>
<ENC-DUP-PRN-NUM>1</ENC-DUP-PRN-NUM>
<ENC-DUP-OPS-NID>99</ENC-DUP-OPS-NID>
<ENC-DUP-HOR-GDH>20240411121219</ENC-DUP-HOR-GDH>
<ENC-DUP-TAG-SIG>QwU6JDyVUvull-
MEkcQBlaEZkeW9r49Oefl1LK8d7CMgPgVIYc76RjX8sSsk5Y_phgv2Ucdccr8Nu6qR8wxYOrzUKbLFP9moXiRnjaBo6cNT3vvSxjJ
EytQqGKyeV_ffkOzvdDsi2i0JVO9tlbap8FEuSH6DhzqckXnj80VZKPJW--
FVygSCGxo9lCtjz6RppwaYjnEpoylVSdpanFIZBEii9x5y8ztZzQpIHlykpXKik2n68kLVh8ZJYKn8uYHgbkRJ63iD_JHcYwV11y-
ObxNCST1y1AQNwcTQ-wkKe2T6srdpO7w5_XB-je0GQi1A6lJAUD8COjjU691eAfbfw</ENC-DUP-TAG-SIG>
<ENC-SIG-MOTIF>COPY REASON</ENC-SIG-MOTIF>
<ENC-DUP-VER>8.6.0</ENC-DUP-VER>
<ENC-DUP-DELIV-TYP>Print</ENC-DUP-DELIV-TYP>
<PreviousSignature>bujL2y31coBPYKk-l0deDNNfDGS7_U22MwdmBNGOS1tFqNDM87EaaNRoS9ZmoWbYWanAr-
xdmjgOcBhYr1_6etwi19qka_dgHf_YEXkALDB9yUS2J2OPMcxYIXj6z0L8t6kqUaGxj1VnJNUFJ33Tisx9J-
YMhbTGSX9ZWC8z_JHEDQPTYupwKjYtIo3-9VMe7RcQi1rvpEHKA3udTb04AjvUSodm8yhib4le7am4n31cqSoz-
Y9b_zG4J9Pzqgrm83N5hhiG5RrZXAnGaW0AvBUcLpUmSgccOpwLT88bENXNfftrqhwmtLazQMznuPYQZyZ5t40HYX6NEsdw8
tpAHQ</PreviousSignature>
<SignableData>2062,Ticket,1,99,20240411121219,123087,O,bujL2y31coBPYKk-
l0deDNNfDGS7_U22MwdmBNGOS1tFqNDM87EaaNRoS9ZmoWbYWanAr-
xdmjgOcBhYr1_6etwi19qka_dgHf_YEXkALDB9yUS2J2OPMcxYIXj6z0L8t6kqUaGxj1VnJNUFJ33Tisx9J-
YMhbTGSX9ZWC8z_JHEDQPTYupwKjYtIo3-9VMe7RcQi1rvpEHKA3udTb04AjvUSodm8yhib4le7am4n31cqSoz-
Y9b_zG4J9Pzqgrm83N5hhiG5RrZXAnGaW0AvBUcLpUmSgccOpwLT88bENXNfftrqhwmtLazQMznuPYQZyZ5t40HYX6NEsdw8
tpAHQ</SignableData>
</Duplicata>
</DuplicataTable>
<GrandTotalTable>
<GrandTotal>
<ENC-GTX-NID>124337</ENC-GTX-NID>
<ENC-GTX-TYP>Ticket</ENC-GTX-TYP>
<ENC-GTX-ORI-NID>123087</ENC-GTX-ORI-NID>
<ENC-GTX-TIK-MTN-TVA-TTC>0550:200</ENC-GTX-TIK-MTN-TVA-TTC>
<ENC-GTX-TIK-TOT-TTC>2.00</ENC-GTX-TIK-TOT-TTC>
<ENC-GTX-TIK-PER-TOT-TTC>3832597.06</ENC-GTX-TIK-PER-TOT-TTC>
<ENC-GTX-PER-TTC>1135203.67</ENC-GTX-PER-TTC>
<ENC-GTX-TIK-HOR-GDH>20240411121149</ENC-GTX-TIK-HOR-GDH>
<ENC-GTX-TIK-TAG-SIG>Almkk2_MGz59gUyGJWRsB2mr7DeitJafK72n4uEmo60OXfGSGhmFlqE4-
d_Ys3qQJewm25o0gOJt5VeU-
MZV_03NCv1f6K5mfRxbqLJ5PKVRSdYD8fHOZfbai52cxex2lgCwbN8UzQoB4euHG1h1HQZbQHNMqhj_u_t17WnHetMftIRRG
9FeDjhPGJQsWt5afMwt1BHV9PB_7ijqpSluDZD8XWgbkR0i9-
4tM8o3KnPKb0LKJqsb_kyywoEj73W7MIGHeb9Et1rSLVH2wSK14WfV7149cYNnhwO5FGZevyorBCIY_fzrEG96bujT9YunmczQA
FuEdrmOlwEP32V72Q</ENC-GTX-TIK-TAG-SIG>
<PreviousSignature>MewVUJRQmsl-
z5iwO6B_sAZVdgnIH1gAXfXR_Bq6hY1vaWZJ8WHxtsNQ0a74n85pCLBrcfAOSa5JIY0ONzIMUKWjkj9kn-

m925ejAudFqSuqKpWDemMKCO3SjbpIj86evYTOzNqOZufgB3IhWHmuXC2vTWrp3wQbPBdQzQRCvllJaeRcmzLHawhjYIAtEm
twjAwCn9kVGyxAEEEnZoMtQ00_Plah1ZKY6j0A8iFK2c1xh3BhWlxwl396nqQrXvjvG95oIMrO9uVI_aZxGIGotaQ9NqQoE5jwZ
XbMQrVLeFxb0NgvktbqBptv-53dlq_IBjVTn2VmT8TnR9S4qgPUg</PreviousSignature>
<SignableData>0550:200,2.00,1135203.67,20240411121149,123087,O,MewVUJRQmsl-
z5iwo6B_sAZVdgnIH1gAXfXR_Bq6hY1vaWZJ8WHxtsNQ0a74n85pCLBrcfAOSA5JlY0ONzIMUKWjkj9kn-
m925ejAudFqSuqKpWDemMKCO3SjbpIj86evYTOzNqOZufgB3IhWHmuXC2vTWrp3wQbPBdQzQRCvllJaeRcmzLHawhjYIAtEm
twjAwCn9kVGyxAEEEnZoMtQ00_Plah1ZKY6j0A8iFK2c1xh3BhWlxwl396nqQrXvjvG95oIMrO9uVI_aZxGIGotaQ9NqQoE5jwZ
XbMQrVLeFxb0NgvktbqBptv-53dlq_IBjVTn2VmT8TnR9S4qgPUg</SignableData>
</GrandTotal>
<GrandTotal>
<ENC-GTX-NID>124338</ENC-GTX-NID>
<ENC-GTX-TYP>Ticket</ENC-GTX-TYP>
<ENC-GTX-ORI-NID>123088</ENC-GTX-ORI-NID>
<ENC-GTX-TIK-MTN-TVA-TTC>0550:-200</ENC-GTX-TIK-MTN-TVA-TTC>
<ENC-GTX-TIK-TOT-TTC>-2.00</ENC-GTX-TIK-TOT-TTC>
<ENC-GTX-TIK-PER-TOT-TTC>3832599.06</ENC-GTX-TIK-PER-TOT-TTC>
<ENC-GTX-PER-TTC>1135201.67</ENC-GTX-PER-TTC>
<ENC-GTX-TIK-HOR-GDH>20240411121316</ENC-GTX-TIK-HOR-GDH>
<ENC-GTX-TIK-TAG-SIG>velsjLt68DHjhrJdF-
x_BFHrHyRjW9VTF7KFwpXlrWTpaNtDstxnOLQ4rwbEsK65TeVcdkt1PfTDop4-wa460VYV6gys1OIZRcs40CW38Kzg-JAVt-
ane-
YlXqvdGKR6xguvlss0KXA50wNuUi06ecVredAQIK5Zg6h8h8QJwBa9pH1J09G1y_xGuwElo987RNUm4mfCRaq_FwSSeB4dP2C
bKYEmjG52otFj6kwfUubstPujRu0YkbKUTGquLLhZQxUYCK-
ONl0z8wWcrBfrvHnSkVc5N8gJJGEPnFCMA1MS1wijitTs3YjggYL20hJDrJBRLH8nEyVmDd5mbhSSQ</ENC-GTX-TIK-TAG-
SIG>
<PreviousSignature>Almkk2_MGz59gUyGWJRsb2mr7DeitJafK72n4uEmo60OXFGSGhmFlqE4-
d_Ys3qQJewm25o0gOjt5VeU-
MZV_03NCv1f6K5mfrxbqLJ5PKVRSdYD8fHOZfbai52cxex2lgCwbN8UzQoB4euHG1h1HQZbQHNmQhj_u_t17WnHetMftIRRG
9FeDjhPGJQsWt5afMwt1BHV9PB_7ijqpSluDZD8XWgbkR0i9-
4tM8o3KnPKb0LKJqsb_kyywoEj73W7MIGHeb9Et1rSLVH2wSK14WfV7149cYNnhwO5FGzevyorBCIY_fzrEG96bujT9YunmczQA
FuEdrmOlwEP32V72Q</PreviousSignature>
<SignableData>0550:-200,-
2.00,1135201.67,20240411121316,123088,O,Almkk2_MGz59gUyGWJRsb2mr7DeitJafK72n4uEmo60OXFGSGhmFlqE4-
d_Ys3qQJewm25o0gOjt5VeU-
MZV_03NCv1f6K5mfrxbqLJ5PKVRSdYD8fHOZfbai52cxex2lgCwbN8UzQoB4euHG1h1HQZbQHNmQhj_u_t17WnHetMftIRRG
9FeDjhPGJQsWt5afMwt1BHV9PB_7ijqpSluDZD8XWgbkR0i9-
4tM8o3KnPKb0LKJqsb_kyywoEj73W7MIGHeb9Et1rSLVH2wSK14WfV7149cYNnhwO5FGzevyorBCIY_fzrEG96bujT9YunmczQA
FuEdrmOlwEP32V72Q</SignableData>
</GrandTotal>
<GrandTotal>
<ENC-GTX-NID>124339</ENC-GTX-NID>
<ENC-GTX-TYP>Daily</ENC-GTX-TYP>
<ENC-GTX-ORI-NID>Z1350</ENC-GTX-ORI-NID>
<ENC-GTX-TIK-MTN-TVA-TTC>0550:0</ENC-GTX-TIK-MTN-TVA-TTC>
<ENC-GTX-TIK-TOT-TTC>0.00</ENC-GTX-TIK-TOT-TTC>
<ENC-GTX-TIK-PER-TOT-TTC>3832599.06</ENC-GTX-TIK-PER-TOT-TTC>
<ENC-GTX-PER-TTC>1135201.67</ENC-GTX-PER-TTC>
<ENC-GTX-TIK-HOR-GDH>20240411121328</ENC-GTX-TIK-HOR-GDH>
<ENC-GTX-TIK-TAG-
SIG>OMOeow8XtlanmXTSAZgEqUVzwq3g0feuemQKekuKD3Nq9sqBTYWTsu4LGMs1Ct5lrefDbR2pUWtjprk_5HnqKMEPLX6
njQ62_wjEVZT7nkSuuQ_OqpR8fKYgeWOSyFQtFwU_VLorLVx-
oARJMXelrn13ldVp0SyHtfv8Zyd9ee1AG73PfcXWwfOEfQ3PRzsezQ7SBX6ffZe-
iuc1Z4T9lj5n7fXjg8dYD0piRchnsYbrWIFbjbbvb8EPyxOQ59keGikpi7Gt9yFfnLCpHXeAnoltV8MPGmtyOfd1dLUTQ80iaTXaHK
VrL8g4dvQljRi1xmxvYFCzVEoro8ga5t88A</ENC-GTX-TIK-TAG-SIG>
<PreviousSignature>velsjLt68DHjhrJdF-x_BFHrHyRjW9VTF7KFwpXlrWTpaNtDstxnOLQ4rwbEsK65TeVcdkt1PfTDop4-
wa460VYV6gys1OIZRcs40CW38Kzg-JAVt-ane-
YlXqvdGKR6xguvlss0KXA50wNuUi06ecVredAQIK5Zg6h8h8QJwBa9pH1J09G1y_xGuwElo987RNUm4mfCRaq_FwSSeB4dP2C
bKYEmjG52otFj6kwfUubstPujRu0YkbKUTGquLLhZQxUYCK-
ONl0z8wWcrBfrvHnSkVc5N8gJJGEPnFCMA1MS1wijitTs3YjggYL20hJDrJBRLH8nEyVmDd5mbhSSQ</PreviousSignature>
<SignableData>0550:0,0.00,1135201.67,20240411121328,Z1350,O,velsjLt68DHjhrJdF-
x_BFHrHyRjW9VTF7KFwpXlrWTpaNtDstxnOLQ4rwbEsK65TeVcdkt1PfTDop4-wa460VYV6gys1OIZRcs40CW38Kzg-JAVt-
ane-
YlXqvdGKR6xguvlss0KXA50wNuUi06ecVredAQIK5Zg6h8h8QJwBa9pH1J09G1y_xGuwElo987RNUm4mfCRaq_FwSSeB4dP2C

bKYEmjG52otFj6kwfUubstpPujRu0YkbKUTGquLLhZQxUYCK-
ONl0z8WwCrBfrvHnSkVc5N8gJJGEPnFCMA1MS1wijitTs3YjggYL20hJDrJBRLH8nEyVmDd5mbhSSQ</SignableData>
</GrandTotal>
</GrandTotalTable>
<JETTable>
<JET>
<JET-NID>29488</JET-NID>
<JET-EVT-NUM>991</JET-EVT-NUM>
<JET-EVT-LIB>StartBusinessDay</JET-EVT-LIB>
<JET-OPE-NID>99</JET-OPE-NID>
<JET-GDH>20240411120600</JET-GDH>
<JET-INF>StartBusinessDay</JET-INF>
<JET-TAG>
SIG>KlkHjzdcVa4Y3VuZVflor7pxT9wKCH9AKxb6ucapToyTi3o_5NpRPzHquOI0pjkbk5V4cYeTejVug003qYKCKykAzMIV9x
YZWEjAu9LEfqhFN1NRJviGHZrfHMJdd9SGBKNUyE48Zq7wRaYwjQlJ1qEutlqAgNqVKnU47TkQg_Y2HE5oYKxQ53hRRLRrTfRm
qkWAuNMaWA1LQkVGpIA52nGrN3_Su0ubdnmzsQHPr1Tv65_YUPsAR0zd0oGrolezBqQhXChRQvAx8R1rOA8nIXKGYk0umZ
bNIsC1SzH2z4SxfsU1UMTRS1IEmSF0wVKZR4TVXWlgWnPwnCUUZwuNg</JET-TAG-SIG>
<TAG-JET-CAI-NID>R216440023</TAG-JET-CAI-NID>

<PreviousSignature>CE0jxCayQlCa5r1qVphrzVf_mxljCDXgieItrMGHU9ttvVtoFAlnxus16fWTlt2UnZkhCNA8ZCEiAsP4dheFH
JTOrBLbCaR6tcRQYUepKnrzRLmv70VDG6yISi-vyltygUtiCx8Vl1azNdrQOHQkprllUqL6eq-Y8fDdBEIWLk-
C0JjkKWXCI4aL7s0vKi6za-pT-
nhNjfwWCBeGsZYf7KLzSud6bVCAPm7KvYpvjdMrv79luDWUilwpG7p8o7lyv7IX4wFzS8XRNqR4zxhBr0TLruDZjli4Clgq8qvdU
GgdjqsImtmjtj6aD-fFrqMIPJ8-dapG9jgjbUuw3PdNIRg</PreviousSignature>

<SignableData>29488,991,StartBusinessDay,20240411120600,99,R216440023,O,CE0jxCayQlCa5r1qVphrzVf_mxljCDXg
ieItrMGHU9ttvVtoFAlnxus16fWTlt2UnZkhCNA8ZCEiAsP4dheFHJTOrBLbCaR6tcRQYUepKnrzRLmv70VDG6yISi-
vyltygUtiCx8Vl1azNdrQOHQkprllUqL6eq-Y8fDdBEIWLk-C0JjkKWXCI4aL7s0vKi6za-pT-
nhNjfwWCBeGsZYf7KLzSud6bVCAPm7KvYpvjdMrv79luDWUilwpG7p8o7lyv7IX4wFzS8XRNqR4zxhBr0TLruDZjli4Clgq8qvdU
GgdjqsImtmjtj6aD-fFrqMIPJ8-dapG9jgjbUuw3PdNIRg</SignableData>
</JET>
<JET>
<JET-NID>29489</JET-NID>
<JET-EVT-NUM>170</JET-EVT-NUM>
<JET-EVT-LIB>Loan</JET-EVT-LIB>
<JET-OPE-NID>99</JET-OPE-NID>
<JET-GDH>20240411121119</JET-GDH>
<JET-INF>Cash:10.00</JET-INF>
<JET-TAG-SIG>RdT_w2x5kLXyj24AGUijj_zAqwkZfyDwAb0V0uwO9eAGIINMpuKQl78qRX6xaZpuvWoW_F5Nov3-
VK9Rt-q_a5M3CWOisqTGZJo2USC0OmVPc8AsAZeMP5q88wxlplvQzZH6qlor3sSwT2cj_e1pb-
glJfJkZVvcnOtdHm5mr3HaA6s8LCeb7_jl56I3tRBtqbKurMzCqnVsP2Z87B60d3li7u_efjqf9mZtyYnYoYtIDI9uiFdllq34FyW3kF
MEZcoRYembcRtY2k5Rcd4KIXRyOQ2dV3RVfCnuHF52XP7JTFReSz7W5expdkVT5VNzSz2CWquuoZKSqoM6nkeutw</JET-
TAG-SIG>
<TAG-JET-CAI-NID>R216440023</TAG-JET-CAI-NID>

<PreviousSignature>KlkHjzdcVa4Y3VuZVflor7pxT9wKCH9AKxb6ucapToyTi3o_5NpRPzHquOI0pjkbk5V4cYeTejVug003q
YKCKykAzMIV9xYZWEjAu9LEfqhFN1NRJviGHZrfHMJdd9SGBKNUyE48Zq7wRaYwjQlJ1qEutlqAgNqVKnU47TkQg_Y2HE5oYKx
Q53hRRLRrTfRmqkWAuNMaWA1LQkVGpIA52nGrN3_Su0ubdnmzsQHPr1Tv65_YUPsAR0zd0oGrolezBqQhXChRQvAx8R1rO
A8nIXKGYk0umZbNIsC1SzH2z4SxfsU1UMTRS1IEmSF0wVKZR4TVXWlgWnPwnCUUZwuNg</PreviousSignature>

<SignableData>29489,170,Cash:10.00,20240411121119,99,R216440023,O,KlkHjzdcVa4Y3VuZVflor7pxT9wKCH9AKxb
6ucapToyTi3o_5NpRPzHquOI0pjkbk5V4cYeTejVug003qYKCKykAzMIV9xYZWEjAu9LEfqhFN1NRJviGHZrfHMJdd9SGBKNUyE
48Zq7wRaYwjQlJ1qEutlqAgNqVKnU47TkQg_Y2HE5oYKxQ53hRRLRrTfRmqkWAuNMaWA1LQkVGpIA52nGrN3_Su0ubdnmzs
QHPr1Tv65_YUPsAR0zd0oGrolezBqQhXChRQvAx8R1rOA8nIXKGYk0umZbNIsC1SzH2z4SxfsU1UMTRS1IEmSF0wVKZR4TVX
WlgWnPwnCUUZwuNg</SignableData>
</JET>
<JET>
<JET-NID>29490</JET-NID>
<JET-EVT-NUM>996</JET-EVT-NUM>
<JET-EVT-LIB>ReceiptPrinted</JET-EVT-LIB>
<JET-OPE-NID>99</JET-OPE-NID>
<JET-GDH>20240411121149</JET-GDH>
<JET-INF>Ticket: 123087 printed. Reason: Customer request</JET-INF>

<JET-TAG-SIG>mEIDhdYQcEbd2WQqIS-rSL2qMkAdYgNqyRzWG18rOY4-
kzgVJNcK9mwFIUTSVaeGd4FuCmVcG1Bbtdu9mbAXA-wnpDVL0Dp_nYxF-
twHncelWCTPR5oeDPNAlYOWEC2Fdy0qI9Bi4xRa8koLlsvJSZxbOp0EseqovQdL_shE1sfZwcmdh6p-QylwnG_PP9ZvV0IVPI-
zHNubTwirDfPp3BKAJdD69fW_aEvv1YYQV3zFUJl6Los88aooBNEH4DO6uRfisNxxaKaI5daj-3jgcyoSW7APC_r2Ej0p0RxB-
N_yc_MPOoPSXrBNltj_d2bxWQs6M_7e-zXyXKvketjQ</JET-TAG-SIG>
<TAG-JET-CAI-NID>R216440023</TAG-JET-CAI-NID>
<PreviousSignature>RdT_w2x5kLXyj24AGUijj_zAqwkZfyDwAb0V0uW09eAGIINMpuKQl78qRX6xaZpuvWoW_F5Nov3-
VK9Rt-q_a5M3CWOisqTGZJo2USCOOmVPc8AsAZeMP5q88wxlplvQzZH6qloR3sSwT2cj_e1pb-
glJfJkZVcnOtdHm5mr3HaA6s8LCeb7_jl56I3tRbtqbKurMzCqnVsP2Z87B60d3li7u_efjqf9mZtyYnYoyTIDI9uiFdllq34FyW3kF
MEZcoRYembcRtY2k5RcD4KIXRyOQ2dV3RVfCnuHF52XP7JTFReSz7W5expdkVT5VNzSz2CWquuoZKSqoM6nkeutw</Previous
Signature>
<SignableData>29490,996,Ticket: 123087 printed. Reason: Customer
request,20240411121149,99,R216440023,O,RdT_w2x5kLXyj24AGUijj_zAqwkZfyDwAb0V0uW09eAGIINMpuKQl78qRX6xa
ZpuvWoW_F5Nov3-VK9Rt-q_a5M3CWOisqTGZJo2USCOOmVPc8AsAZeMP5q88wxlplvQzZH6qloR3sSwT2cj_e1pb-
glJfJkZVcnOtdHm5mr3HaA6s8LCeb7_jl56I3tRbtqbKurMzCqnVsP2Z87B60d3li7u_efjqf9mZtyYnYoyTIDI9uiFdllq34FyW3kF
MEZcoRYembcRtY2k5RcD4KIXRyOQ2dV3RVfCnuHF52XP7JTFReSz7W5expdkVT5VNzSz2CWquuoZKSqoM6nkeutw</Signabl
eData>
</JET>
<JET>
<JET-NID>29491</JET-NID>
<JET-EVT-NUM>320</JET-EVT-NUM>
<JET-EVT-LIB>TicketAbandon</JET-EVT-LIB>
<JET-OPE-NID>99</JET-OPE-NID>
<JET-GDH>20240411121239</JET-GDH>
<JET-INF>#151620 abandoned: VOID</JET-INF>
<JET-TAG-SIG>TMwm-
VobeUW3RpzTyykrj3hUEXN89_0qxP_7ICQxMC5TEgt4VmPkwrTauFksc1JClmEmQM85oKhXQkMnI5jRmAznNxxafRKEv8_r
WWs0yFbGGRFmxo_1cGA0ZPHAx7teDpFpXvjLEertpx6P58QJGzFZiDKc6JQKJIKXco-
bba8szyVjrTjNIHgsitXnDZVgsapOzJrMFyhomWq3hnHdjHGHFhp1j6sgzeLdVIO5ta2PRr71ycgxo9yRveGbFrj7_i_xb2QLaG86
U8hNBbU9RqSzeAopk8I8mGyRSISqkrI0icuKZR4RLFh2Qr3C1hx7XB4-A64j1E6A1kEyKw</JET-TAG-SIG>
<TAG-JET-CAI-NID>R216440023</TAG-JET-CAI-NID>
<PreviousSignature>mEIDhdYQcEbd2WQqIS-rSL2qMkAdYgNqyRzWG18rOY4-
kzgVJNcK9mwFIUTSVaeGd4FuCmVcG1Bbtdu9mbAXA-wnpDVL0Dp_nYxF-
twHncelWCTPR5oeDPNAlYOWEC2Fdy0qI9Bi4xRa8koLlsvJSZxbOp0EseqovQdL_shE1sfZwcmdh6p-QylwnG_PP9ZvV0IVPI-
zHNubTwirDfPp3BKAJdD69fW_aEvv1YYQV3zFUJl6Los88aooBNEH4DO6uRfisNxxaKaI5daj-3jgcyoSW7APC_r2Ej0p0RxB-
N_yc_MPOoPSXrBNltj_d2bxWQs6M_7e-zXyXKvketjQ</PreviousSignature>
<SignableData>29491,320,#151620 abandoned:
VOID,20240411121239,99,R216440023,O,mEIDhdYQcEbd2WQqIS-rSL2qMkAdYgNqyRzWG18rOY4-
kzgVJNcK9mwFIUTSVaeGd4FuCmVcG1Bbtdu9mbAXA-wnpDVL0Dp_nYxF-
twHncelWCTPR5oeDPNAlYOWEC2Fdy0qI9Bi4xRa8koLlsvJSZxbOp0EseqovQdL_shE1sfZwcmdh6p-QylwnG_PP9ZvV0IVPI-
zHNubTwirDfPp3BKAJdD69fW_aEvv1YYQV3zFUJl6Los88aooBNEH4DO6uRfisNxxaKaI5daj-3jgcyoSW7APC_r2Ej0p0RxB-
N_yc_MPOoPSXrBNltj_d2bxWQs6M_7e-zXyXKvketjQ</SignableData>
</JET>
<JET>
<JET-NID>29492</JET-NID>
<JET-EVT-NUM>996</JET-EVT-NUM>
<JET-EVT-LIB>ReceiptPrinted</JET-EVT-LIB>
<JET-OPE-NID>99</JET-OPE-NID>
<JET-GDH>20240411121316</JET-GDH>
<JET-INF>Ticket: 123088 printed. Reason: Customer request</JET-INF>
<JET-TAG-SIG>1mNHezMhIQaoKK0Zpeay5NLk2xp_VIFTrpgx5Bu960qXGvtUZI7yhsrdh6aguB-
LA_96r1ojvHa44fGslRAv-YPs6ILkcbpe2oK145rQuHywYxHkHh8W-
eaME_355kle02JzP_cZP4MBBiBITBXI8ZCJg9KpGGKbZ8ESVYrUFUEnyU9SE93BcpEBFyWo7qz7pLG6Zk0WvzrGIznFw1g0gtt2o
eUDbQNVnQg2RQC6xEV_syTZAxlzeVt0wzcicCzyPk45FplBHV-
C36tkMwN9zpDtVdhczU9qtRamiXiWPFUcnpNuYDaWgzOvll-a_nqJaXcp5Hcv0ZUg_nX0uXw</JET-TAG-SIG>
<TAG-JET-CAI-NID>R216440023</TAG-JET-CAI-NID>
<PreviousSignature>TMwm-
VobeUW3RpzTyykrj3hUEXN89_0qxP_7ICQxMC5TEgt4VmPkwrTauFksc1JClmEmQM85oKhXQkMnI5jRmAznNxxafRKEv8_r
WWs0yFbGGRFmxo_1cGA0ZPHAx7teDpFpXvjLEertpx6P58QJGzFZiDKc6JQKJIKXco-
bba8szyVjrTjNIHgsitXnDZVgsapOzJrMFyhomWq3hnHdjHGHFhp1j6sgzeLdVIO5ta2PRr71ycgxo9yRveGbFrj7_i_xb2QLaG86
U8hNBbU9RqSzeAopk8I8mGyRSISqkrI0icuKZR4RLFh2Qr3C1hx7XB4-A64j1E6A1kEyKw</PreviousSignature>
<SignableData>29492,996,Ticket: 123088 printed. Reason: Customer
request,20240411121316,99,R216440023,O,TMwm-
VobeUW3RpzTyykrj3hUEXN89_0qxP_7ICQxMC5TEgt4VmPkwrTauFksc1JClmEmQM85oKhXQkMnI5jRmAznNxxafRKEv8_r

WWs0yFbGFRFmxo_1cGA0ZPHAx7teDpFpXvjLEertpx6P58QJGzFiDKc6JQKJIKXco-
bba8szyVjrTjNIHgsitXnDZVgsapOzJrMFyhomWq3hnHdjHGHFhp1j6sgzeLdVIO5ta2PRr71ycgxo9yRvEGbFrj7_i_xb2QLaG86
U8hNBbU9RqSzeAopk8l8mGyRSISqkrl0icuKZR4RLfH2Qr3C1hx7XB4-A64j1E6A1kEyKw</SignableData>
</JET>
<JET>
<JET-NID>29493</JET-NID>
<JET-EVT-NUM>170</JET-EVT-NUM>
<JET-EVT-LIB>Pickup</JET-EVT-LIB>
<JET-OPE-NID>99</JET-OPE-NID>
<JET-GDH>20240411121323</JET-GDH>
<JET-INF>Cash:5.00</JET-INF>
<JET-TAG-SIG>bMedDtDRkewuHxgksvaEGbV1AIW5F6euQtlzFZtrafM6Ut5pF-
quP3K8ysYOOWAyJagipVZ8UeRIVVziF2bon7JODmsVliZ7t1DlhwXh7fzejiYtiFh1NRrdyiN0diWok0ddinX44GhVWRH7SJ4WckaJ
qDcKEmu2OjvY4qOTcL-QPnLBF2sLHnQT1Yq-
xgRcTca9RRgeF6Sr85ZfhnXbWLonv2wz3KkfWozmD652MHO1KSz2FZ1gscM7ud0qGrDz_216HkS3d-
mYlVvhovwA9paspWnxOuvArICEfL-N6nvG_V30r3mPuw5naOmxxLzgcE7Vx5JvHPMQJEH1KWLkw</JET-TAG-SIG>
<TAG-JET-CAI-NID>R216440023</TAG-JET-CAI-NID>
<PreviousSignature>1mNHezMhIQaoKK0Zpeay5NLk2xp_VIFTrpgx5Bu960qXGvtUZI7yhsrdh6aguB-
LA_96r1ojvHa44fGslRAv-YPs6ILkcbpe2oK14SrQuHywYxHkHh8W-
eaME_355kle02JzP_cZP4MBBiBITBXI8ZCJg9KpGGKbZ8ESVYrUFUEnyfU9SE93BcpEBFyWo7qz7pLG6Zk0WvzrGlZnFw1g0gtt2o
eUdbQNvnQg2RQC6xEV_syTZAxdIzeVt0wzcicCzypk45FipIBHV-
C36tkMwN9zpDtVdhczU9qtRAmXiWPFUcnpNuYDaWgzOvll-a_nqJaXcp5Hcv0ZUg_nX0uXw</PreviousSignature>

<SignableData>29493,170,Cash:5.00,20240411121323,99,R216440023,O,1mNHezMhIQaoKK0Zpeay5NLk2xp_VIFTrpgx
5Bu960qXGvtUZI7yhsrdh6aguB-LA_96r1ojvHa44fGslRAv-YPs6ILkcbpe2oK14SrQuHywYxHkHh8W-
eaME_355kle02JzP_cZP4MBBiBITBXI8ZCJg9KpGGKbZ8ESVYrUFUEnyfU9SE93BcpEBFyWo7qz7pLG6Zk0WvzrGlZnFw1g0gtt2o
eUdbQNvnQg2RQC6xEV_syTZAxdIzeVt0wzcicCzypk45FipIBHV-
C36tkMwN9zpDtVdhczU9qtRAmXiWPFUcnpNuYDaWgzOvll-a_nqJaXcp5Hcv0ZUg_nX0uXw</SignableData>
</JET>
<JET>
<JET-NID>29494</JET-NID>
<JET-EVT-NUM>330</JET-EVT-NUM>
<JET-EVT-LIB>DailyClosingInitialization</JET-EVT-LIB>
<JET-OPE-NID>99</JET-OPE-NID>
<JET-GDH>20240411121329</JET-GDH>
<JET-INF>DailyClosingInitialization 1347</JET-INF>
<JET-TAG-
SIG>Hk03sdp962v27G5NiMwRKLYkf3N_qwZG2ubmoFW55YHK_1YoTV4oQQ_cXA9ZfsQqsOL3NjCQMh4oFn9bEKNBNXrGK
Fim5NzFj5GX9bQ6yKSI6O7CJ3aNa9_KzlhjTP46LRAEIUFEm-jc_GWQpy9rrDKonvpWxHiY_HefLL4EJGd_3VjBixlgF9cSfWXP-
Vervcoxb2PUOPRar1UvsXfT5f63fuxQE7bBeTqz4x_s7bOADYypQPqCFeyb8exdvODb_gqPSSsv6zDMRfIMjAe9jWndBe32HsVQ
z_10U6TKaUhGmpsMf5edVkBbG0uPef2WGrMG5kaDGs84b-yixNPgdA</JET-TAG-SIG>
<TAG-JET-CAI-NID>R216440023</TAG-JET-CAI-NID>
<PreviousSignature>bMedDtDRkewuHxgksvaEGbV1AIW5F6euQtlzFZtrafM6Ut5pF-
quP3K8ysYOOWAyJagipVZ8UeRIVVziF2bon7JODmsVliZ7t1DlhwXh7fzejiYtiFh1NRrdyiN0diWok0ddinX44GhVWRH7SJ4WckaJ
qDcKEmu2OjvY4qOTcL-QPnLBF2sLHnQT1Yq-
xgRcTca9RRgeF6Sr85ZfhnXbWLonv2wz3KkfWozmD652MHO1KSz2FZ1gscM7ud0qGrDz_216HkS3d-
mYlVvhovwA9paspWnxOuvArICEfL-N6nvG_V30r3mPuw5naOmxxLzgcE7Vx5JvHPMQJEH1KWLkw</PreviousSignature>
<SignableData>29494,330,DailyClosingInitialization
1347,20240411121329,99,R216440023,O,bMedDtDRkewuHxgksvaEGbV1AIW5F6euQtlzFZtrafM6Ut5pF-
quP3K8ysYOOWAyJagipVZ8UeRIVVziF2bon7JODmsVliZ7t1DlhwXh7fzejiYtiFh1NRrdyiN0diWok0ddinX44GhVWRH7SJ4WckaJ
qDcKEmu2OjvY4qOTcL-QPnLBF2sLHnQT1Yq-
xgRcTca9RRgeF6Sr85ZfhnXbWLonv2wz3KkfWozmD652MHO1KSz2FZ1gscM7ud0qGrDz_216HkS3d-
mYlVvhovwA9paspWnxOuvArICEfL-N6nvG_V30r3mPuw5naOmxxLzgcE7Vx5JvHPMQJEH1KWLkw</SignableData>
</JET>
<JET>
<JET-NID>29495</JET-NID>
<JET-EVT-NUM>50</JET-EVT-NUM>
<JET-EVT-LIB>ZReport</JET-EVT-LIB>
<JET-OPE-NID>99</JET-OPE-NID>
<JET-GDH>20240411121329</JET-GDH>
<JET-INF>ZReport</JET-INF>
<JET-TAG-
SIG>P9T2tgTroGhzpIBZEICSGqjxCs6gjjDlwfCbrNrsZVADbtXvsI9A1nVYxs0ARmjzG7niEUf8WQmovIDp5iFBq5OolBXWH2C1u
g3DdaBgHsZGio7mKTrpsUI9cMsq4czep_Gnb67pozSyNFknsVm83OtuMprv3ewD5DRAQDBLc11hynwmu9GdqYmFu3GDvBo

xTl2nULbBBL7IIL7l_ue1g9LA8l_C_WBuMxMxKf1aESiUs3-
nagLdJt4IRrrfXkTdOdn7y0V9w4OqWTIHZgUbfxHfsGCKKHB4fSqfGsL0Rf2MifN2CzPJPp0iukotAhkPR0knOXMtCZNQIVUgzd
NIA</JET-TAG-SIG>
<TAG-JET-CAI-NID>R216440023</TAG-JET-CAI-NID>

<PreviousSignature>Hk03sdp962v27G5NiIMwRKLYkF3N_qwZG2ubmoFW55YHK_1YoTV4oQQ_cXA9ZfsQqsOL3NjCQmH4o
Fn9bEKNBNXrGKFim5NzFj5GX9bQ6yKSI6O7CJ3aN9_KzlhJTP46LRAEIUFEm-
jc_GWQpy9rrDKonvpWxHiY_HefLL4EJGd_3VjBlxlgF9cSfWXP-
Vervcox2PUOPRar1UvXf5f63fuxQE7bBeTqz4x_s7bOADYypQPqCFeyb8exdvODb_gqPSSsv6zDMRflMjAe9jWndBe32HsVQ
z_10U6TKaUhGmpsMf5edVkBbG0uPef2WGrMG5kaDGs84b-yixNPgdA</PreviousSignature>

<SignableData>29495,50,ZReport,20240411121329,99,R216440023,O,Hk03sdp962v27G5NiIMwRKLYkF3N_qwZG2ubm
oFW55YHK_1YoTV4oQQ_cXA9ZfsQqsOL3NjCQmH4oFn9bEKNBNXrGKFim5NzFj5GX9bQ6yKSI6O7CJ3aN9_KzlhJTP46LRAEI
FEm-jc_GWQpy9rrDKonvpWxHiY_HefLL4EJGd_3VjBlxlgF9cSfWXP-
Vervcox2PUOPRar1UvXf5f63fuxQE7bBeTqz4x_s7bOADYypQPqCFeyb8exdvODb_gqPSSsv6zDMRflMjAe9jWndBe32HsVQ
z_10U6TKaUhGmpsMf5edVkBbG0uPef2WGrMG5kaDGs84b-yixNPgdA</SignableData>

</JET>
<JET>
<JET-NID>29496</JET-NID>
<JET-EVT-NUM>992</JET-EVT-NUM>
<JET-EVT-LIB>CloseBusinessDay</JET-EVT-LIB>
<JET-OPE-NID>99</JET-OPE-NID>
<JET-GDH>20240411121332</JET-GDH>
<JET-INF>CloseBusinessDay</JET-INF>
<JET-TAG-

SIG>XaeKS8GOqQvGNr89y4Lo0X6gDAsWgTOvEz5ph8YHrihGSxVuj5Hs9WNAgaPuz6o2cjfvFH0YP70us6Offxk9IK4P12hcci
8w6wbjCHDRGgLLJNulqkD-hzhK7D8d02zQQ0gCVyqBaaB8D89a_oJ8kzCG9T1RrHKF6jc9PQAJ8oKc-pgea3B-
6buc8qPEpKN-
AafZ005aYVcQPV_J2oONbNUaDluCXZsRFz053SNcpGgnNlwkQ9RjoduUgzKAZWv4PZ_HRtgo66EVVLQWjG6PWul5efrG3qylqX
ZHVVLUPIL8mSiGOH-d3d9LA7U6D7I3w4w_SbicnlzBQF_vwsg</JET-TAG-SIG>
<TAG-JET-CAI-NID>R216440023</TAG-JET-CAI-NID>

<PreviousSignature>P9T2tgTroGhzplBZEICSGqjxCs6gjdIwfcBrNrsZVAdBtXvsI9A1nVYxs0ARmjzG7niEUf8WQmovlDp5iFBq
5OolBXWH2C1ug3DdaBghsZGio7mKTrpsUI9cMsq4czep_Gnb67pozSyNFknsVm83OtuMprv3ewD5DRAQDBLc11hynwmu9G
dqYmFu3GDvBoxTl2nULbBBL7IIL7l_ue1g9LA8l_C_WBuMxMxKf1aESiUs3-
nagLdJt4IRrrfXkTdOdn7y0V9w4OqWTIHZgUbfxHfsGCKKHB4fSqfGsL0Rf2MifN2CzPJPp0iukotAhkPR0knOXMtCZNQIVUgzd
NIA</PreviousSignature>

<SignableData>29496,992,CloseBusinessDay,20240411121332,99,R216440023,O,P9T2tgTroGhzplBZEICSGqjxCs6gjdI
wfcBrNrsZVAdBtXvsI9A1nVYxs0ARmjzG7niEUf8WQmovlDp5iFBq5OolBXWH2C1ug3DdaBghsZGio7mKTrpsUI9cMsq4czep_
Gnb67pozSyNFknsVm83OtuMprv3ewD5DRAQDBLc11hynwmu9GdqYmFu3GDvBoxTl2nULbBBL7IIL7l_ue1g9LA8l_C_WBuMx
MxKf1aESiUs3-
nagLdJt4IRrrfXkTdOdn7y0V9w4OqWTIHZgUbfxHfsGCKKHB4fSqfGsL0Rf2MifN2CzPJPp0iukotAhkPR0knOXMtCZNQIVUgzd
NIA</SignableData>

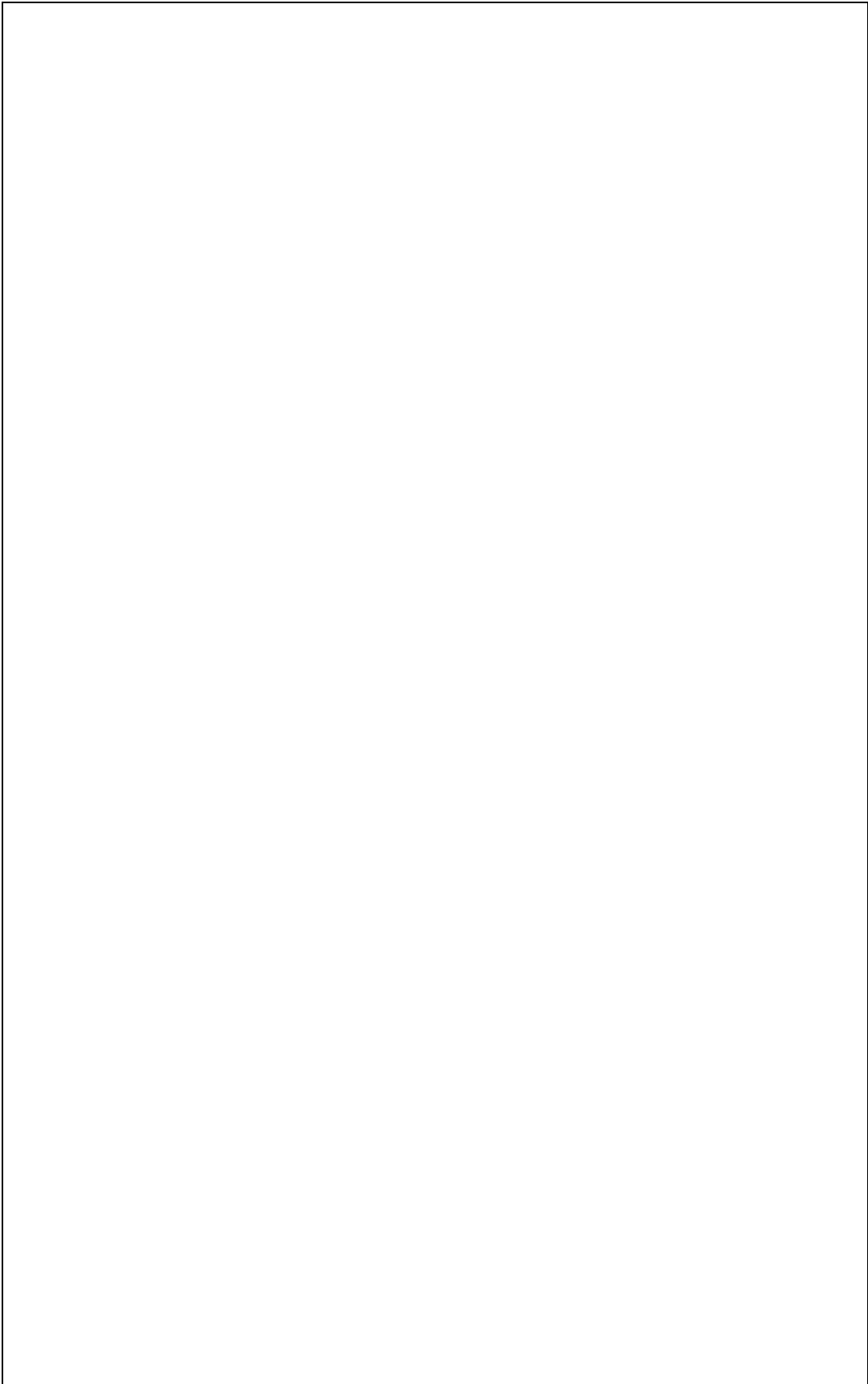
</JET>
<JET>
<JET-NID>29497</JET-NID>
<JET-EVT-NUM>20</JET-EVT-NUM>
<JET-EVT-LIB>Daily fiscal archive</JET-EVT-LIB>
<JET-OPE-NID>99</JET-OPE-NID>
<JET-GDH>20240411121332</JET-GDH>
<JET-INF>NF525\20240411121332_1347.xml.gz</JET-INF>

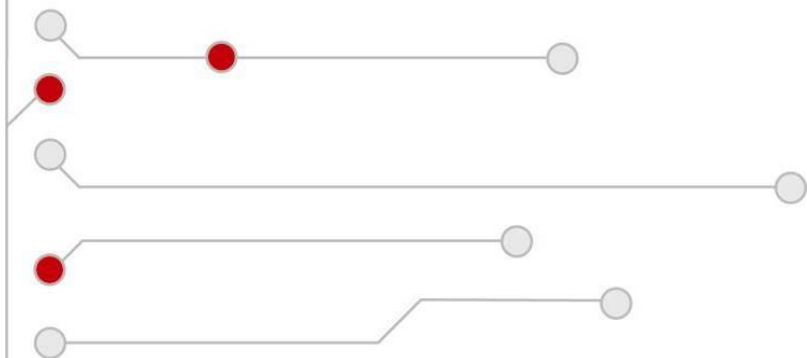
<JET-TAG-SIG>CkyocwvzhYjZNGZgLWLrREngPWOxFFb6ab_ZH3m-bQ5i_ogJPcpTPxrN6bXdd1ILKHjcjPN-
JnXRUKZkLwTGM1mkopdWRqO1Nltd-svCUgFI_4bEC6C3qtjEQ4Xxafu9E7OTSvQd_OwYMWMMHIOtu7sBcOWEj--xgt-
1vS2GjslDDlJrWCH-midxGbpwL6se54v0sYIR9Umpd8vzyx9FxFKPr93JsGLTOPfLYf1RpLIX-
cuOCR9YEkwFAmk_z_aF3YSYBnyj0UxxgDtstfMVQCcjS9RiFAXzwobJlAq78pkog6pTnK6v1QZk0G-
CQN4yKJelUHy3O5ncRiiWadaQ8Q</JET-TAG-SIG>
<TAG-JET-CAI-NID>R216440023</TAG-JET-CAI-NID>

<PreviousSignature>XaeKS8GOqQvGNr89y4Lo0X6gDAsWgTOvEz5ph8YHrihGSxVuj5Hs9WNAgaPuz6o2cjfvFH0YP70us6O
ffxk9IK4P12hcci8w6wbjCHDRGgLLJNulqkD-hzhK7D8d02zQQ0gCVyqBaaB8D89a_oJ8kzCG9T1RrHKF6jc9PQAJ8oKc-
pgea3B-6buc8qPEpKN-
AafZ005aYVcQPV_J2oONbNUaDluCXZsRFz053SNcpGgnNlwkQ9RjoduUgzKAZWv4PZ_HRtgo66EVVLQWjG6PWul5efrG3qylqX
ZHVVLUPIL8mSiGOH-d3d9LA7U6D7I3w4w_SbicnlzBQF_vwsg</PreviousSignature>

```
<SignableData>29497,20,NF525\20240411121332_1347.xml.gz,20240411121332,99,R216440023,O,XaeKSB0GOqQvG
Nr89y4Lo0X6gDAsWgTOvEz5ph8YHrihGSxVuj5Hs9WNAgaPuz6o2cjfvFH0YP70us6Offxk9IK4P12hcci8w6wbjCHDRGgLLJNU
lqkD-hzhK7D8D02zQQ0gCVyqQbAaB8D89a_oOj8kzCG9T1RrHKF6jc9PQAJ8oKc-pgea3B-6buc8qPEpKN-
AafZ005aYVcQPv_J2oONbNUaDluCXZsRFz053SNcpGgnNlwkQ9RjoduUgzKAZWv4PZ_HRtgo66EVVLQWjG6PWul5efrG3qylqX
ZHvVLUPIL8mSiGOH-d3d9LA7U6D7I3w4w_SbicnlzBQF_wvsg</SignableData>
</JET>
</JETTable>
<PublicKey>
-----BEGIN CERTIFICATE-----
MIIDGzCCAgOgAwIBAgIQIXpnnYXwdpplcrj9VozsGzANBgkqhkiG9w0BAQ0FADAv
MS0wKwYDVQQDDCRUaWdlciBTdG9yZXMgRnJhbmNlIFNBbUyBbUzUxNDU0MDAxN10w
IBcNMjIwNTA5MDAwMDAwWhgPMjA3MTA1MDkwMDAwMDBAwMC8xLTArBgNVBAMMJFRp
Z2VvIFN0b3JlcyBGMFuY2UgU0FTIFtTNTe0NTQwMDE3XTCCASlWdQYJKoZIhvcN
AQEBBQADggEPADCCAQoCggEBANnw5x+1aKFD2oICXdd5sdKj/aORr1NfyCFIF4nq
T3VjOizHve6eGfo976gdEPFR83BAJMV2FYBFhBK/TT96IK7xLIQ908QDhZLNjxml
tRi1/QpdGLT2UWG3Eyx5IS4ErWLPmk4xieOTMCIxYbhKezS8sr7xvdo4dBwsKUX
Q3eYD6mYnr0qGVQTF4cctd/ISXiBqD/jL1grW22IJP/oYIDQiLr8s1aa9E20AQRq
kxxQzZJ9cH7mig/L+IUvXx/9Re4ttTiRumQf03FvIQPv4lJaPNNWGBt8TqT6OzjP
0isR5Q+kvySp1SJLZPSVqu3mNdn0JS+A9k0mWi/eflNxcGkCAwEAAAMxMC8wHQYD
VR0OBBYEFN9Soxpe8rDTzUm57ZnMAfRir45VMA4GA1UdDwEB/wQEAwIHgDANBgkq
hkiG9w0BAQ0FAAOCAQEAL6VdBoUcOHqnUqpia4OW7r1snwCeDBsPHOBE01AqFCy5
6uwozOII8A+GA2ubf8kvh4xcOdkrLEfKSkWwXqzIAoBGko1ew4pz265Eww12zSmj
CjAb0bT9FDEYIbJGa2N0YSggF9dvCYaOPSbvalIXlo9q8CbKAXDpySj+3BGGsWs5
t5JCwKV6Q1h5Qt8CztqvKBpNNXfoyl0168Oy1Jh1jeVnf//UlkQx5HSrbfaMRcD
Qlp59v+44WnihK2mh2bCR42Q8EDC0I74yASK3MaNaCVueHPgFUGOK2FR2fNR1+4a
SBe9i9EJYAR/2li+7rXizGrh+5R3JLqa/nNjKTASlw==
-----END CERTIFICATE-----
</PublicKey>
<Signature xmlns="http://www.w3.org/2000/09/xmldsig#">
  <SignedInfo>
    <CanonicalizationMethod Algorithm="http://www.w3.org/TR/2001/REC-xml-c14n-20010315" />
    <SignatureMethod Algorithm="http://www.w3.org/2001/04/xmldsig-more#rsa-sha256" />
    <Reference URI="">
      <Transforms>
        <Transform Algorithm="http://www.w3.org/2000/09/xmldsig#enveloped-signature" />
      </Transforms>
      <DigestMethod Algorithm="http://www.w3.org/2001/04/xmldsig#sha256" />
      <DigestValue>0LNiHwFisFwHysFSzi/2OU5KUlcdfgVEaUJaNY7IMxo=</DigestValue>
    </Reference>
  </SignedInfo>

  <SignatureValue>iH0eNZ/3uQZ50HFJa/nSSnfUiMJJdHulMDJbBjaoR9hHAzeVaZQzpiwbvdiUGYv1SgmqkLThBPixlyBh8L6cf87
  TIDomQ2pDX//NVtnZCYvzK24X9I6GRTlwEw0eobw/NyP0PzYBDssbe3gksigU3fQ4EBBh4WQ0xgSedGsnX8LGZXMIjcrGP084
  UpmDUilbVxelo4iSUBvVQAQWInd4C7HHjYpEHkF+pp2MYf5BU6y8QVYd1wAjOhP1xGFnFHY+HH2nt09rzs/+MuXZvqAh87
  T15qaGu8csab84OWym5Mm6WIlbZfz3ZUgzEEvXu+NdSjioLIjsW7JsNFKOOBe/Q==</SignatureValue>
</Signature>
</Archive>
```

NOTES



Computer Hardware Design Ltd.

15 Ulbrokas street
Riga, LV1021
Phone: +371 67802812
Fax: +371 67802822
chd@chd.lv
www.chd.lv